



PRODUCT DATA SHEET: MATRIX ONE

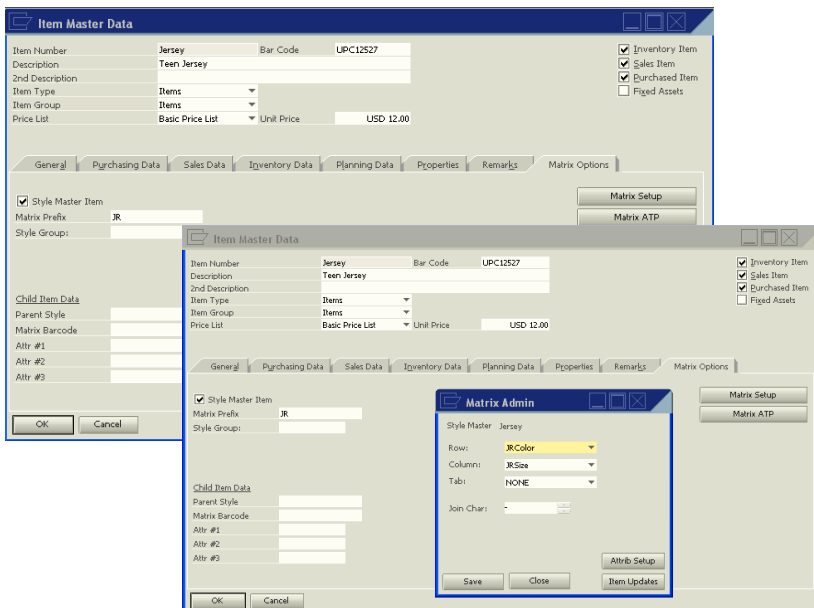
Matrix One extends the customer and purchase order capabilities of Business One to allow users the ability to easily define attributes to items such as, but not limited to, color, style, and size.

PRODUCT OVERVIEW

All too often, standard customer and purchase order entry systems fall short of satisfying the requirements of many industries. This is especially true for apparel, footwear, furniture, cabinet, textile, or any other industry where multiple attributes are used to define an item or SKU. Matrix One helps you and your organization define multiple attributes such as color, style, and size to be associated with items which can filled out on the sales order.

Because *Matrix One* was developed using the standard SAP Business One *Development Toolkit*, it works perfectly within Business One.

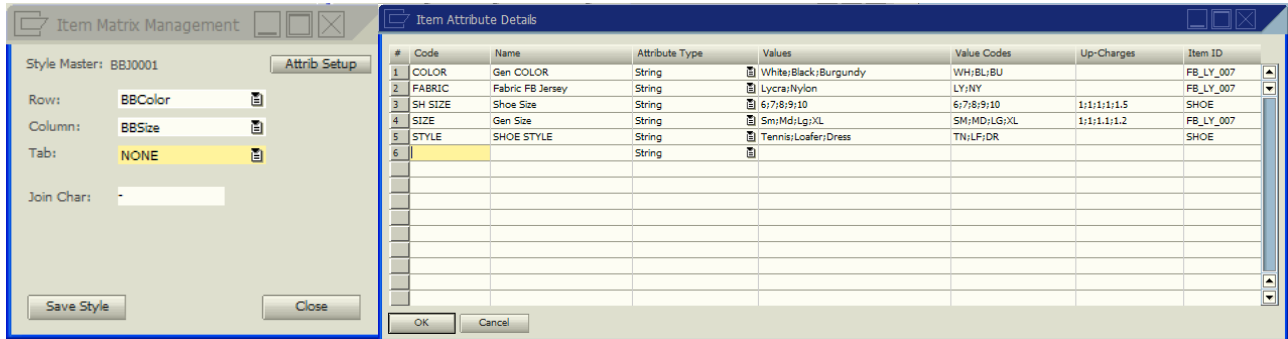
Users can also define a three-dimensional (3-D) matrix for each of the SKUs using the "Item Matrix Management Window," as illustrated below. Once a user has entered the attribute name, type, and any/all possible values for an item, it saves the matrix definition. *Matrix One* then generates an "Item Attribute Details" screen.



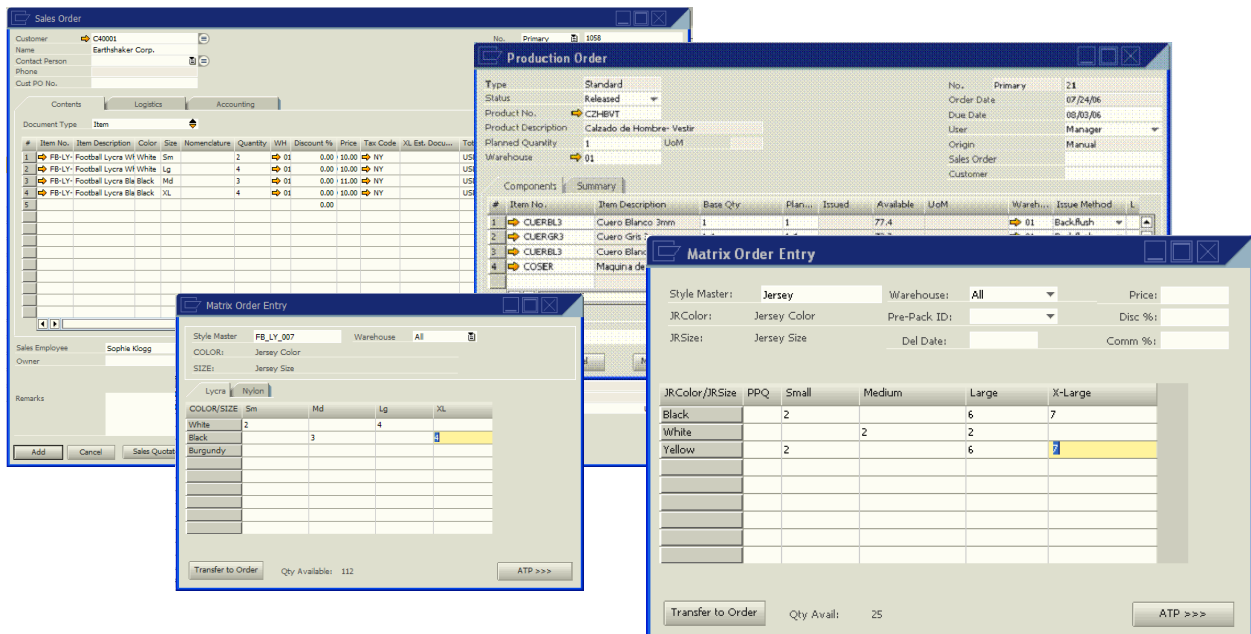
KEY PRODUCT FUNCTIONALITY

- ⇒ **Seamless Integration with SAP Business One**—completely integrated into the standard Business One data storage framework, enabling all standard Business One functions such as, order placement, picking, packing, shipping, and add-on capabilities such as WMS and e-Commerce to operate as standard "off-the-shelf" functions.
- ⇒ **Automatic Prompting During Order Entry**—Items "flagged as Matrix items, automatically present the Matrix Attribute screen to the order entry user and allow the order taker to automatically save the attributes in the standard Business One order line
- ⇒ **Flexible, user-defined item attributes**—users can define any item attributes desired in the multi-dimensional matrix. Typical attributes include, but are not limited to color, style, and size
- ⇒ **Matrix One for Production**—for companies who need to create a production order based on a sales order created with the matrix. Embedded style master has a BOM consisting of all possible raw materials that can go into the finished product. When a production order is complete, for example, all child items (issuing the raw materials, receiving in the actual child items, and adjusting out the style master) by receiving completed quantities via the Matrix.
- ⇒ **Pre-Pack Functionality**—size and quantity templates are used to automatically populate the Matrix order form with pre-defined quantity values for corresponding sizes
- ⇒ **Automatic Updates**— Users can apply changes to any number of child items simply by making a change to the parent item

Once specific items in Business One have been flagged in the item master as matrix classified items, the *Matrix One* order entry screen is displayed and the Business One order entry user will be prompted to enter the customer's desired attributes (such as: color, style, size, etc.) and appended to the order line. The "transfer to order" function then takes the entered quantities, and creates individual line items/SKUs on the sales order, where the orders are then processed through the normal Business One order processing function.



Matrix One can also generate production orders from the matrix-generated sales orders, ensuring the selected attributes of a given product style will be used in the manufacturing process of the items specified in *Matrix One*. When a production order is completed, the user will be able to receive all the child items from a single screen.



TO LEARN MORE ABOUT MATRIX ONE, OR ANY OF OUR BUSINESS ONE ADD-INS, CALL US TODAY



OFFICES LOCATED NATIONWIDE
 ARIZONA—CALIFORNIA—COLORADO—CAROLINAS—FLORIDA—GEORGIA
 ILLINOIS—LOUISIANA—MASSACHUSETTS—MINNESOTA—MISSOURI
 NEW JERSEY—NEW YORK—OHIO—OKLAHOMA—PENNSYLVANIA
 TEXAS—UTAH—VIRGINIA—WASHINGTON

(801) 642-0123—WWW.NBS-US.COM

