

PRODUCT DATA SHEET: DATA COLLECT ONE— FOR DISTRIBUTION



Data Collect One—for Distribution provides extended inventory and material tracking capabilities to SAP Business One.

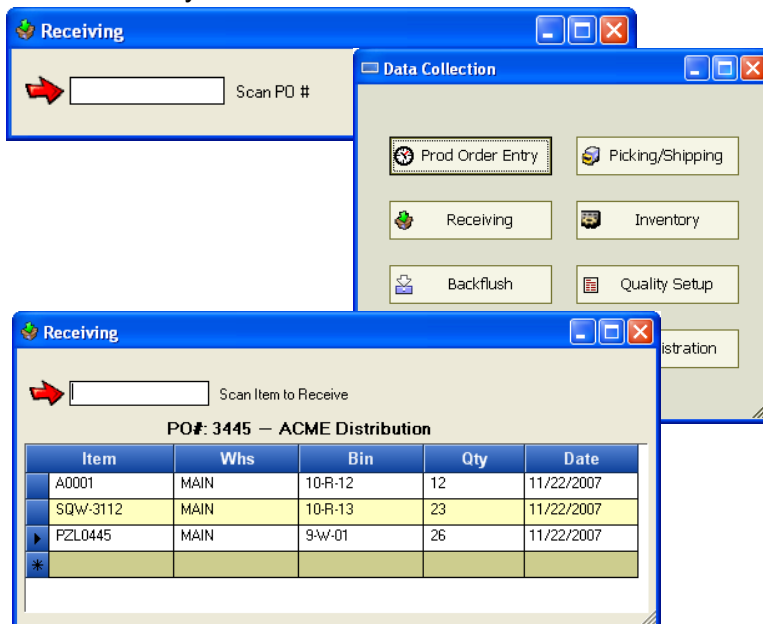
Data Collect One—for Distribution allows organizations to improve control over inventory so to drive increase operational profitability. Now, distribution-based companies can easily manage their inventory and materials via touch screen and bar code collection devices.

PRODUCT OVERVIEW

Companies needing to better manage and control their inventory and warehouses will find *Data Collect One—for Distribution* to be a valuable addition to SAP Business One. *Data Collect One—for Distribution* is a fully-integrated module for Business One, that ensure all inventory and materials can be tracked and automatically posted. *Data Collect One—for Distribution* can be deployed in multiple varieties so to better suit an individual organization's needs, including touch screen and bar code data collection device entry.

Data Collect One—for Distribution is specifically designed to improve the following processes:

- Shipping
- Receiving
- Inventory Moves & Transfers
- Cycle Counts



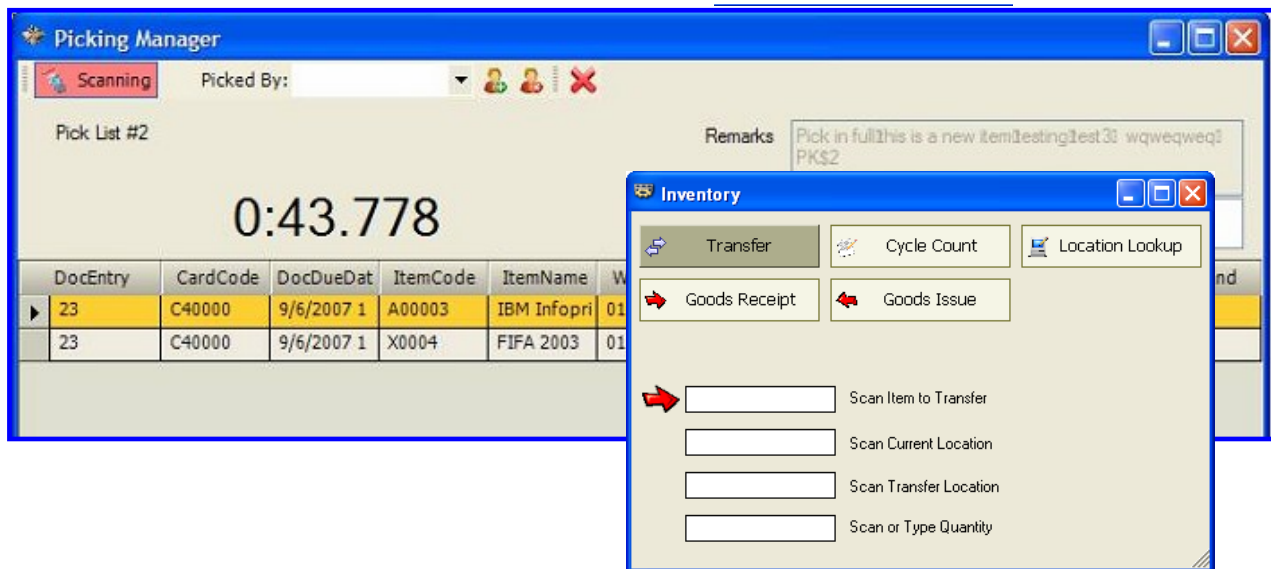
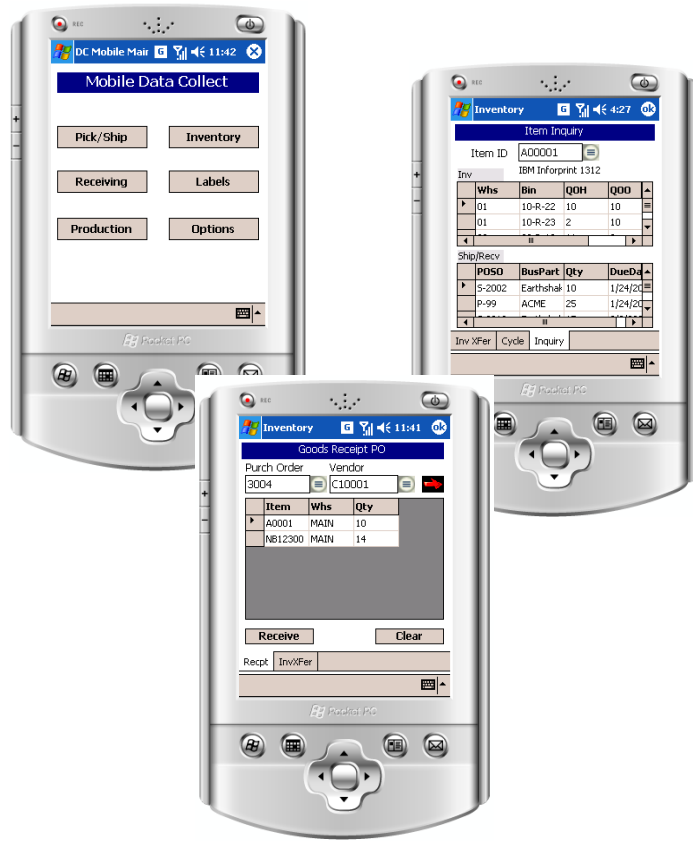
KEY PRODUCT FUNCTIONALITY

- ⇒ **Serial Numbers & Batch Numbers**—Assign serial numbers and batch numbers at the moment a goods receipt is issued. Users can track serial and batch numbers in inventory and assign them to production orders and finished goods.
- ⇒ **Receiving**—Receive inventory directly into a pre-determined default bin location, or into a specified area to be put away at a later time
- ⇒ **Wave Picking / Pick Builder**—Users can organize their picking order in the warehouse either by specific items, by customers' orders, or by those orders which are able to 100% fulfilled. To speed up the fulfillment process, users can select and fill orders based on several criteria:
 - All requested items to a certain customer
 - All orders with single line items, allowing similar items to be picked at the same time
- ⇒ **Inventory Lookup**—Know exactly where all inventory items are located at all times.

With *Data Collect One—for Distribution*, users can process “wave” picks from Business One’s *Pick & Pack Manager*, using a packing station to create and verify a packing slip, enabling faster delivery via the Plus One—Shipping module.

With *Data Collect One—for Distribution*, warehouse employees can receive and optimally put away goods using the *Plus One—Bins* module. *Data Collect One—for Distribution* also supports Inventory transfers between warehouses, cycle counting, and location lookup for all items.

Data Collect One—for Distribution provides an excellent and cost-effective extension for distributors needing to expand their Business One system into an automated warehouse management system.



TO LEARN MORE ABOUT DATA COLLECT ONE—FOR DISTRIBUTION OR ANY OF OUR BUSINESS ONE ADD-INS, CALL US TODAY

OFFICES LOCATED NATIONWIDE

ARIZONA—CALIFORNIA—COLORADO—CAROLINAS—FLORIDA—GEORGIA
ILLINOIS—LOUISIANA—MASSACHUSETTS—MINNESOTA—MISSOURI
NEW JERSEY—NEW YORK—OHIO—OKLAHOMA—PENNSYLVANIA
TEXAS—UTAH—VIRGINIA—WASHINGTON

(801) 642-0123—WWW.NBS-US.COM

